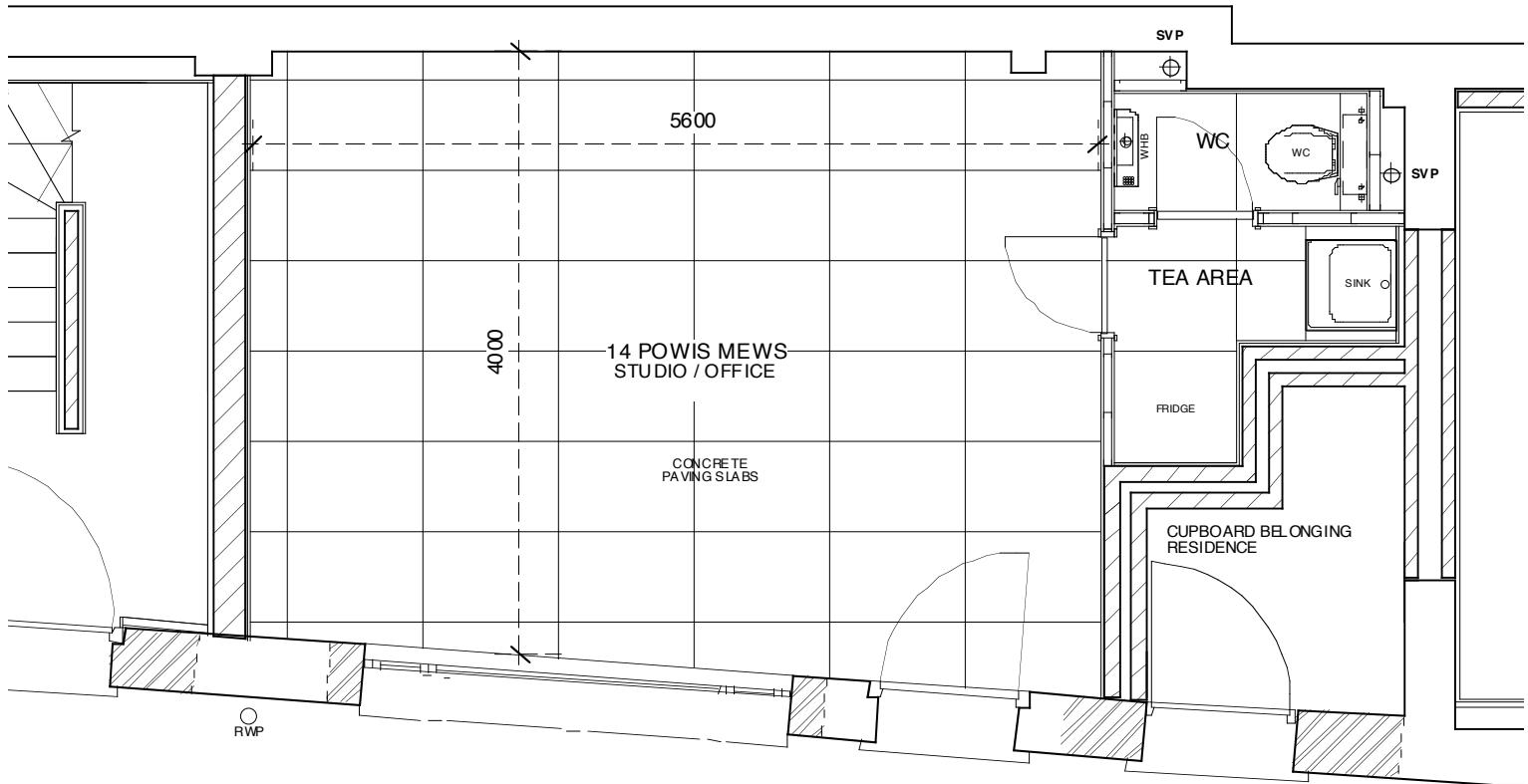


14 POWIS MEWS
GROUND FLOOR
STUDIO / OFFICE (B1 USE)

SCALE 1:50

ARCHITECT: SOPHIE HICKS, SH ARCHITECTS
LIGHTING: ARUP

DETAILS:
FLOORS - CONCRETE PAVING SLABS
WALLS - WHITE EMULSION
ENTRANCE DOOR - OAK WITH 2 HIGH SECURITY LOCKS
WINDOW - 3m x 3m STEEL FRAMED WINDOW WITH 1 LARGE PANE
AND 2 SLIM OPENING PANES ALL IN SAFETY GLASS WITH LOCKS.
ELECTRICALLY OPERATED GIANT "VENETIAN" LOUVRE SHUTTERS
TO MODERATE LIGHT AND VISIBILITY.
HEATERS - ELECTRIC, WHITE ENAMEL GILLED TUBE WITH THERMOSTATIC CONTROL
POWER AND TELEPHONE INSTALLED



ARCHED WINDOW
3m x 3m APPROX
WITH GIANT "VENETIAN" LOUVRE SHUTTERS

OAK FRONT DOOR